

MAX

SPECIFICATIONS

The Max surgical table series is intended to be used with mobile x-ray units for minimally invasive procedures on patients as large as 500 lbs.

- Tabletop and Mattress attenuation 1.2mm Al. (+/- .3mm tolerance)
- Table Dimensions: 84"L x 24"W
- Tabletop Material: Carbon fiber skin/foam core with integral facial cut-out
- Tabletop: 84"L x 24"W x 1.62"T
- 5" Castors have full swivel & wheel lock
- Radiolucent Area: 56"L x 24"W unobstructed
- Mattress: 2" thick (5 cm)
- H Shaped steel base 51"L x 26"W with Epoxy Finish
- Patient Capacity: 500lb(227kg)
- Patient Straps: 2
- Hand Control: Activates all motions
- Bellows to cover and protect table motor components
- Twist-lock removeable power cord
- Modular Side Rail System
- Emergency Stop Switch

Warranty

Surgical Tables Incorporated provides a 4-Year Limited Warranty/4- year warranty on non-electrical parts and 1-year warranty on electrical components. The warranty is only valid to the original purchaser and is not transferable. Surgical Tables Incorporated has the right to assess if mis-use has occurred. In the case of mis-use the warranty is void.

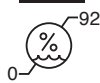
Systems Requirements for all models:

Required Power

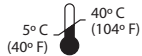
-120V/60HZ or 230V/50HZ



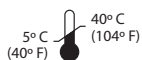
- Protect product from moisture



- Allowable Storage & Operating Humidity: 0-92%



- Allowable Storage Temperature: 0°C(32°F) to + 40°C(104°F)



- Allowable Operating Temperature: up to 40°C (104°F)



MAX 1

Max Series 1 Move Surgical Table

1. HEIGHT..... 28" TO 38"
- TABLE WEIGHT: 550lbs(249kg)
Patient Capacity: 500lbs(227kg)

	USA	(*CE) EUROPE
AC Voltage	120V~	230V~
Frequency	60 Hz	50 Hz
AC Current	2.5A	1.3A
Electric Shock Protection	Class I	Class I
Applied Part Rating	Type B	Type B
Mode of Operation	10% Duty Cycle 1 min on, 9 minutes off	10% Duty Cycle 1 min on, 9 minutes off

MAX 2

Max Series 2 Move Surgical Table

1. HEIGHT..... 28" TO 38"
 2. LATERAL TILT..... (+/-) 17°
- TABLE WEIGHT: 520lbs(236kg)
Patient Capacity: 500lbs(227kg)

	USA	(*CE) EUROPE
AC Voltage	120V~	230V~
Frequency	60 Hz	50 Hz
AC Current	2.5A	1.3A
Electric Shock Protection	Class I	Class I
Applied Part Rating	Type B	Type B
Mode of Operation	10% Duty Cycle 1 min on, 9 minutes off	10% Duty Cycle 1 min on, 9 minutes off

MAX 3

Max Series 3 Move Surgical Table

1. HEIGHT..... 28" TO 38"
 2. LATERAL TILT..... (+/-) 17°
 3. TRENDLENBURG (+/-) 13°
- TABLE WEIGHT: 580lbs(263kg)
Patient Capacity: 500lbs(227kg)

	USA	(*CE) EUROPE
AC Voltage	120V~	230V~
Frequency	60 Hz	50 Hz
AC Current	2.5A	1.3A
Electric Shock Protection	Class I	Class I
Applied Part Rating	Type B	Type B
Mode of Operation	10% Duty Cycle 1 min on, 9 minutes off	10% Duty Cycle 1 min on, 9 minutes off

MAX 4

Max Series 4 Move Surgical Table

1. HEIGHT..... 30" TO 40"
 2. LATERAL TILT..... (+/-) 17°
 3. TRENDLENBURG (+/-) 13°
 4. LONGITUDINAL TRAVEL 10" (+/- 5")
- TABLE WEIGHT: 740lbs (335kg)
Patient Capacity: 500lbs(227kg)

	USA	(*CE) EUROPE
AC Voltage	120V~	230V~
Frequency	60 Hz	50 Hz
AC Current	6.5A	3.4A
Electric Shock Protection	Class I	Class I
Applied Part Rating	Type B	Type B
Mode of Operation	10% Duty Cycle 1 min on, 9 minutes off	10% Duty Cycle 1 min on, 9 minutes off

MAX 5

Max Series 5 Move Surgical Table

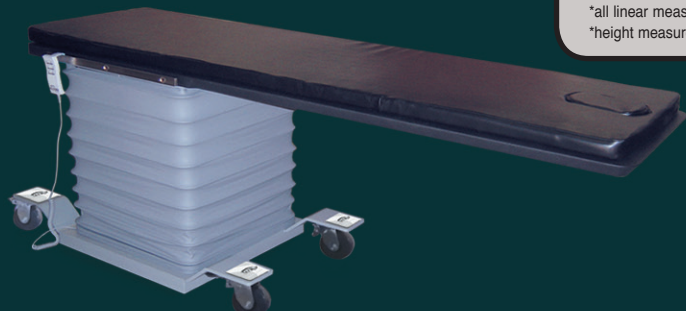
1. HEIGHT..... 33.5" TO 43.5"
 2. LATERAL TILT..... (+/-) 17°
 3. TRENDLENBURG (+/-) 13°
 4. LONGITUDINAL TRAVEL 10" (+/- 5")
 5. LATERAL TRAVEL 10" (+/- 5")
- TABLE WEIGHT: 840lbs(381kg)
Patient Capacity: 500lbs(227kg)

	USA	(*CE) EUROPE
AC Voltage	120V~	230V~
Frequency	60 Hz	50 Hz
AC Current	6.5A	3.4A
Electric Shock Protection	Class I	Class I
Applied Part Rating	Type B	Type B
Mode of Operation	10% Duty Cycle 1 min on, 9 minutes off	10% Duty Cycle 1 min on, 9 minutes off

*all angular measurements +/- 2°

*all linear measurements +/- .25"

*height measurement is to the top of the carbon fiber top



Toll Free: 888-737-5044
www.surgicaltables.com

2 DeBush Ave Unit 3C
Middleton, MA 01949 USA